



Midcom Duplex/Simplex Pumping and Filtering Units have been designed and supplied to a World Wide customer base for over 50 years.

The **Midcom** Fuel Oil Pumping and Filtering Units are totally self-contained fully piped, electrically connected and mounted on a steel base with save all catchment tray. The tray incorporates lifting arrangement and holding down points. Electrical earthing point is provided and the electric motors are bonded to steelwork to comply with legislation.

Turnkey systems often come complete with motorised pumps, filter, instrumentation and motor control all ready for immediate connection and operation on site.

Standard units are provided with duplex suction filters with changeover mechanism to enable service/maintenance without interrupting the fluid flow.

Products are run tested in the test cell before they leave the factory.

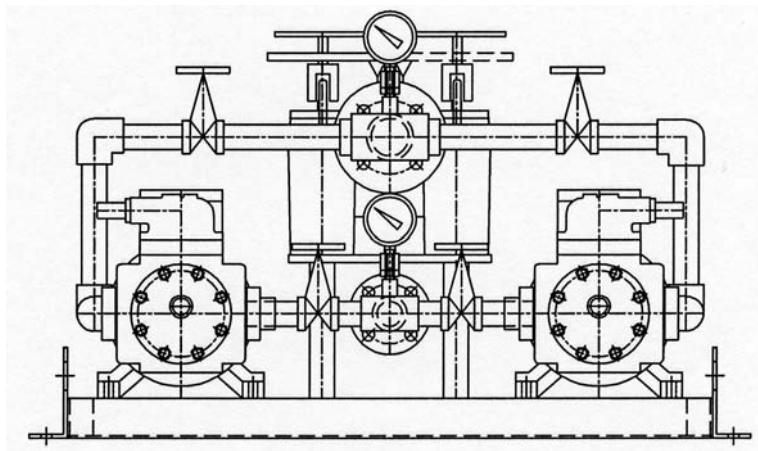
Technical information for Pumping Oils

Fuel Oils	Pumping Temperature	Filtration
Class E	Ambient	250 Micron
Class F	40°C	740 Micron
Class G	50°C	740 Micron



idcom

Midland Combustion Heavy Fuel / Diesel Oil Transfer & Pressurizing Units

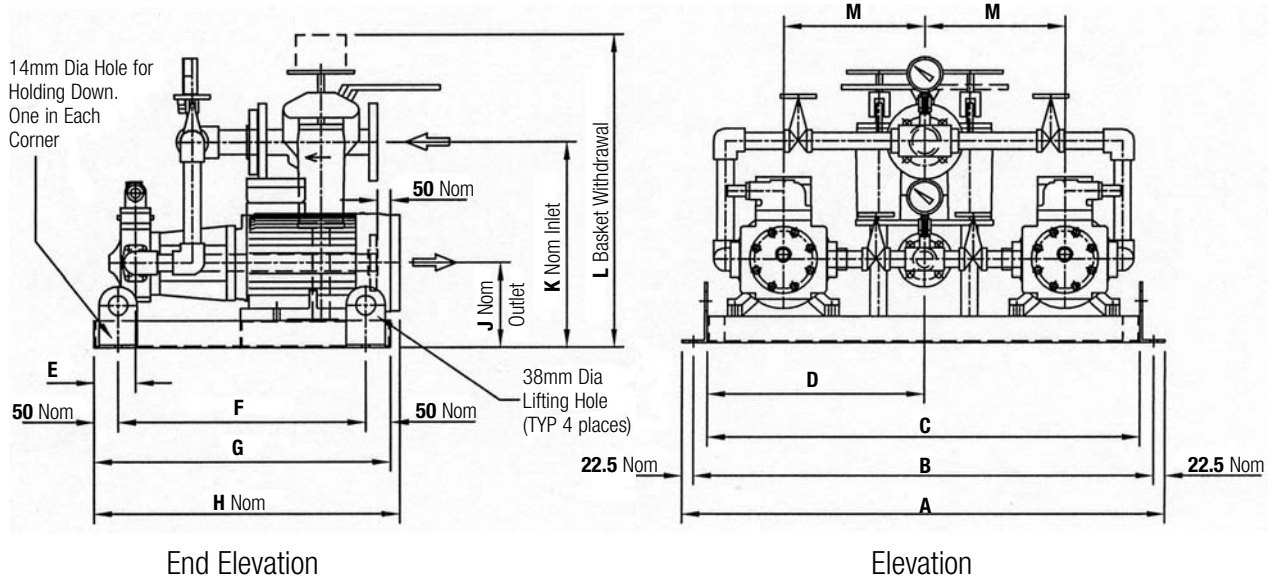


Midcom Pumping Set Type	Capacity for Heavy Fuel Oils 380 cSt at 50°C Pumping Temperature/ 3.75 Barg Outlet Pressure	Capacity for Diesel Oil 3-7 3-7 cSt at 20°C 3.75 Barg Outlet Pressure	Standard Motor Rating IP55	Electric Control Panel Reference
	I/hr	I/hr	kW	
MC/1010/6/P2/0.75	700	–	0.55	MC/CP/10106/P2
MC/1010/P2/0.75HP	1100	705	0.55/0.37	MC/CP/1010/P2
MC/1012/P2/1.5HP	1755	1195	1.1/0.55	MC/CP/1012/P2
MC/1014/P2/2HP	2275	1080	1.5/0.75	MC/CP/1014/P2
MC/1015/P2/3HP	3510	1985	2.2/1.1	MC/CP/1015/P2
MC/1017/6/P2/3HP	4415	3475	2.2/1.5	MC/CP/10176/P2
MC/1017/P2/5.5HP	6555	5300	4/2.2	MC/CP/1017/P2
MC/1020/6/P2/4HP	7280	–	3	MC/CP/10206/P2
MC/1020/P2/7.5HP	10465	7145	5.5/4	MC/CP/1020/P2
MC/1022/P2/7.5HP	14100	10285	5.5/5.5	MC/CP/1022/P2



idcom

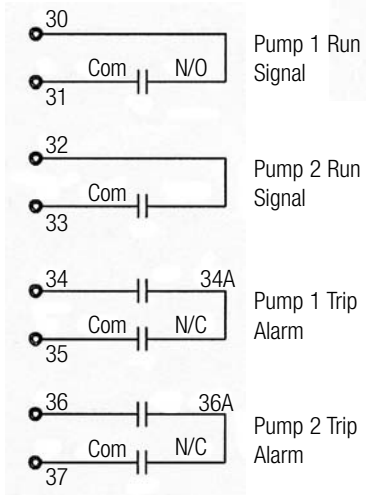
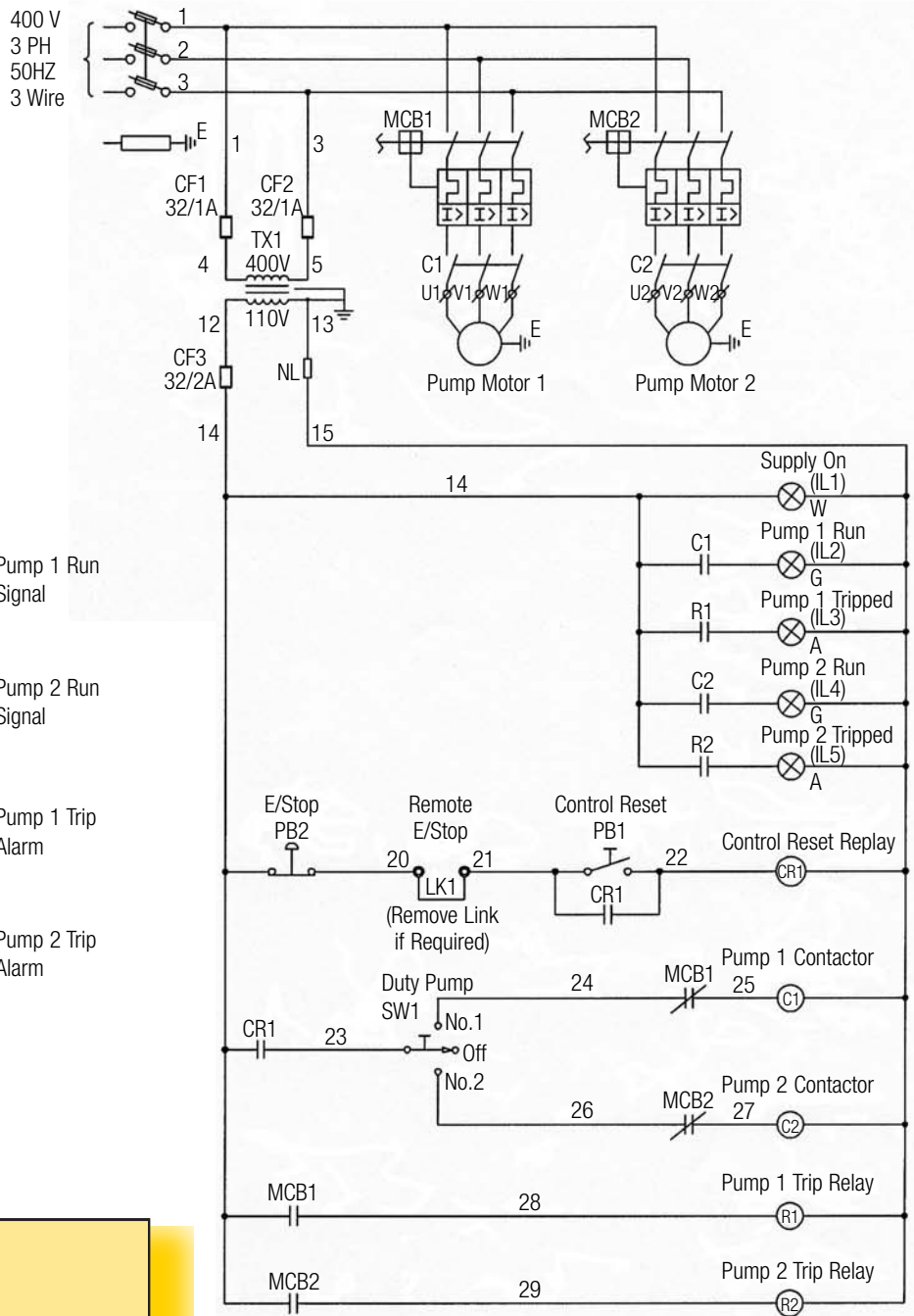
Midland Combustion Heavy Fuel / Diesel Oil Transfer & Pressurizing Units Dimensions



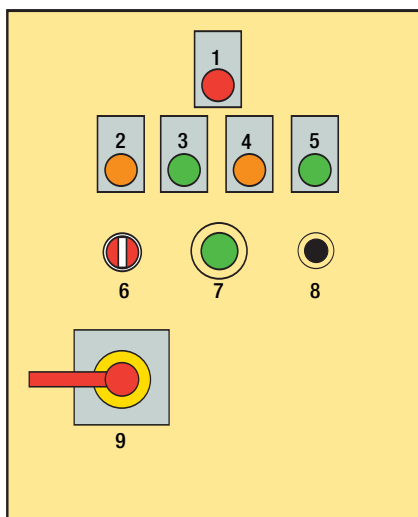
Midcom Pump Code	L/Hr	W/P	kW	mm A	mm B	mm C	mm D	mm E	mm F	mm G	mm H	mm J	mm K	mm L	mm M	ANSI B16.5 Class 150 Inlet Conn	ANSI B16.5 Class 150 Outlet Conn
MC/1010/6/P2/0.75HP	700	-	0.55	950	905	850	425	125	475	575	N/A	133	350	560	230	25	15
MC/1010/P2/0.75HP	1100	-	0.55	950	905	850	425	125	475	575	N/A	133	350	560	230	25	15
MC/1012/P2/1.5HP	1755	-	1.1	950	905	850	425	95	475	575	N/A	143	350	560	250	25	20
MC/1014/P2/2HP	2275	7 Bar	1.5	950	905	850	425	80	475	575	N/A	143	350	560	270	25	25
MC/1015/P2/3HP	3510	-	2.2	950	905	850	425	80	475	575	595	153	400	616	275	40	25
MC/1017/6/P2/3HP	4415	-	2.2	1150	1150	1050	525	88	580	675	N/A	165	460	735	210	50	40
MC/1017/P2/5.5HP	6555	-	4.0	1150	1150	1050	525	88	580	675	N/A	185	460	735	210	50	40
MC/1020/6/P2/4HP	7280	-	3.0	1500	1455	1400	700	114	800	900	N/A	185	625	965	375	50	50
MC/1020/P2/7.5HP	10465	-	5.5	1500	1455	1400	700	114	800	900	N/A	185	625	965	375	80	50



Electrical Wiring Diagram



Last Wire No.37



Door Layout for 2 Pump IP65 Control Panel

- 1. Supply On Light (IL1)
- 2. Pump No.1 Run Light (IL2)
- 3. Pump No.2 Run Light (IL4)
- 4. Pump No.1 Tripped Light (IL3)
- 5. Pump No.2 Tripped Light (IL5)
- 6. Duty Pump Select Switch SW1 – No.1/Off/No.2
- 7. E – Stop PB2
- 8. Control Reset PB1
- 9. Fuse Switch Handle