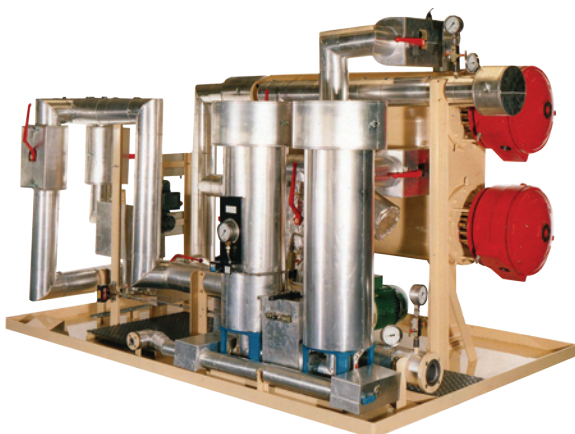
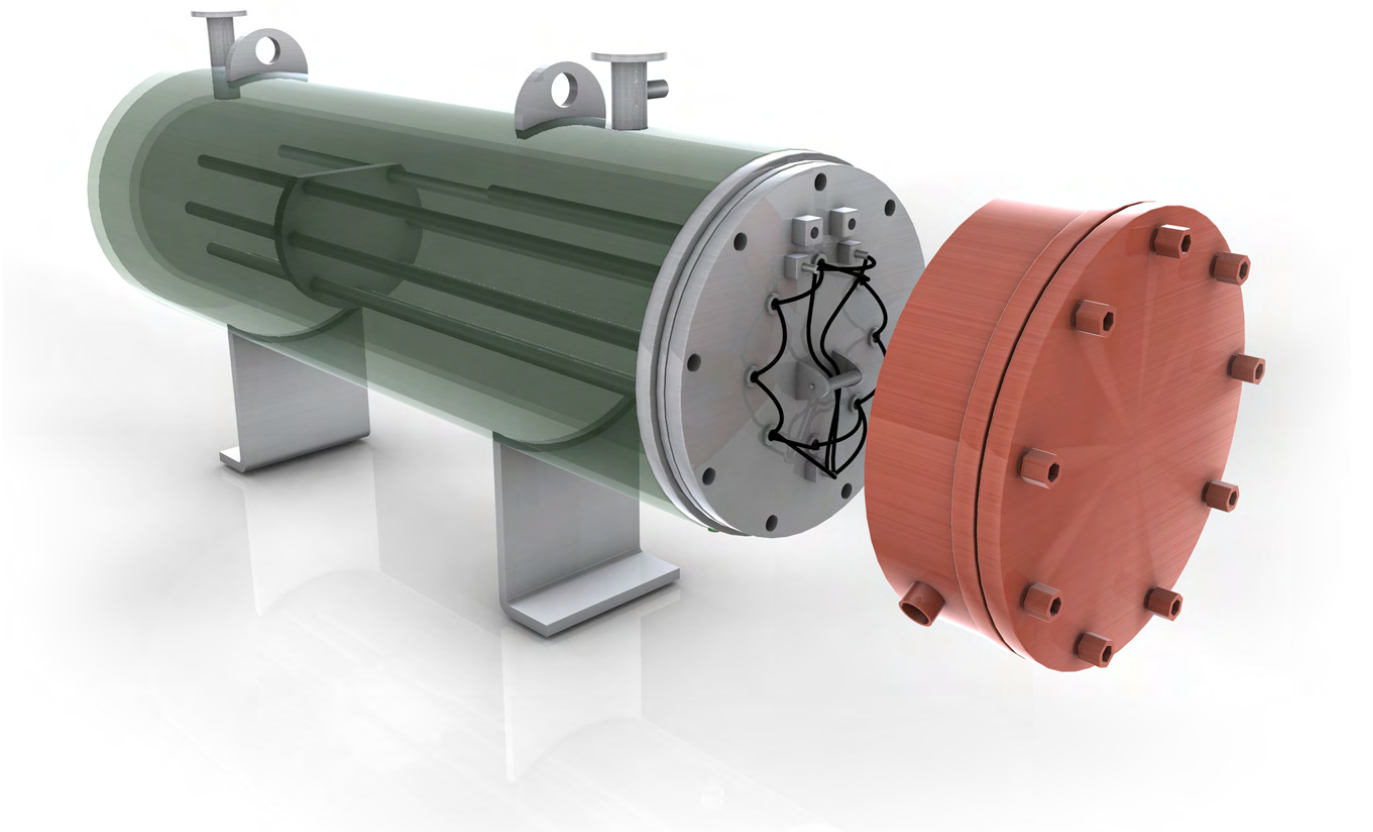




# Midland Combustion Ltd

## EX/ELW - FLAME PROOF ELECTRIC LINE HEATER

Ideal as booster, ring main, combustion, oil and water heaters



**Midcom** Flame Proof Removable Core Electric Line Heaters are available to work with even the most difficult oils and process fluids when there is no other heating medium available.

High viscosity crude oils as well as coal tar, bitumen, mineral oils, water and a host of process fluids can be heated to specific temperatures and controlled precisely either by traditional thermostat or the more up to date method of solid state electronic control offering more accurate temperature control and power saving.



**idcom**

# Midland Combustion Electric Line Heaters



**Midcom** Flame Proof Removable Core Electric Line Heaters are available to work with even the most difficult oils and process fluids when there is no other heating medium available.

High viscosity crude oils as well as coal tar, bitumen, mineral oils, water and a host of process fluids can be heated to specific temperatures and controlled precisely either by traditional thermostat or the more up to date method of solid state electronic control offering more accurate temperature control and power saving.

Long life low watts density removable ceramic core elements are designed for optimum trouble free service and ease of maintenance.

All **Midcom** Horizontal Line Heaters from **EX/ELW** range are fitted with adjustable temperature control thermostat and over temperature – cut out – thermostat. Depending on how the heating load is arranged multiple heating banks with multiple thermostats are designed for efficient heater control fitted into pockets and located within a weather tight enclosure.

They are extensively used in small and large heating applications such as Diesel Engine Installations, light oil systems where there is a need to prevent waxing at low temperatures, combustion systems, furnace applications, all styles of heavy fuel oil ring main/ power boiler systems where accurate temperature control is needed.

With subtle design changes the heaters can be used for the heating of BIO Fuels, Animal fats, Waste oils and for heating process water.

All heaters are compliant with European Legislation covering CE markings/PED approval with the basic design complying with PD5500 and/or ASME.

<b>Certified</b>	To meet the requirements of the ATEX Directive 94/9/EC. IECEx For use in Zone 1 a Class 1 Division 2 Hazardous Area. Terminal exclusive protection to IP66
<b>Certification</b>	SIRA 11ATEX 1011 IECEx SIR 11.0004
<b>Voltage</b>	Any electrical supply up to 690v

The first design pressure range is 11.67 barg but heaters as high as 70 barg are designed and supplied for specific process conditions.

One advantage of the Midcom Electric Line Heater is that a failed electric element can be replaced without the need to isolate and drain the heater. All heaters in the Midcom range have been supplied for Marine applications requiring rigorous inspections for the like of Lloyds Register of Shipping, Zurich, ABS etc. Products are hydraulic and electrical tested before they leave the factory.

## Midland Combustion Limited

Station Works, Four Ashes, Wolverhampton WV10 7BX, UK

Tel: +44 (0)1902 790541 - Fax: +44 (0) 791526

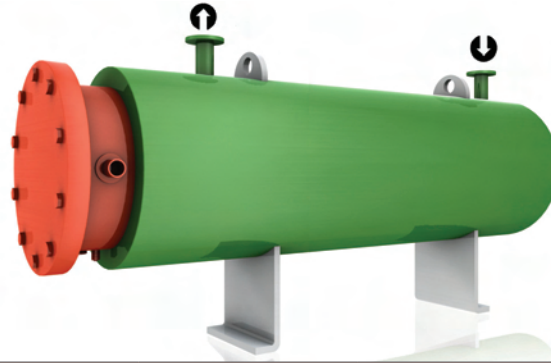
e.mail: sales@mid-com.co.uk - www.mid-com.co.uk



**idcom**

# Midland Combustion Electric Line Heaters

**ATEX**   
**IECEx**



Midcom Code	Load for Heavy Fuel Oils	Rating for Lubricating Oils	Rating for Waste Oils	Maximum Heating Capacity for HFO. Through 45°C
	kW	kW	kW	kg/hr
EX/ELW 4 - 18	2.7	2.0	1.35	107
EX/ELW 4 - 24	3.6	2.7	1.8	143
EX/ELW 4 - 30	4.5	3.4	2.25	178
EX/ELW 4 - 36	5.4	4.1	2.7	214
EX/ELW 4 - 42	6.3	4.7	3.15	250
EX/ELW 4 - 48	7.2	5.4	3.6	285
EX/ELW 4 - 60	9.0	6.8	4.5	356
EX/ELW 4 - 72	10.8	8.1	5.4	428
EX/ELW 4 - 84	12.6	9.5	6.3	499
EX/ELW 4 - 96	14.4	10.8	7.2	570
EX/ELW 6 - 24	10.8	8.1	5.4	745
EX/ELW 6 - 30	13.5	10.125	6.75	535
EX/ELW 6 - 42	18.9	14.175	9.45	749
EX/ELW 6 - 48	21.6	16.2	10.8	855
EX/ELW 6 - 60	27.0	20.25	13.5	1069
EX/ELW 6 - 72	32.4	24.3	16.2	1283
EX/ELW 6 - 84	37.8	28.35	18.9	1497
EX/ELW 6 - 96	43.2	32.4	21.6	1711
EX/ELW 8 - 30	22.5	16.88	11.25	891
EX/ELW 8 - 36	27.0	20.25	13.5	1069
EX/ELW 8 - 42	31.5	23.63	15.75	1248
EX/ELW 8 - 48	36.0	27.0	18.0	1426
EX/ELW 8 - 60	45.0	33.75	22.5	1782
EX/ELW 8 - 72	54.0	40.5	27.0	2139
EX/ELW 8 - 84	63.0	47.25	31.5	2495
EX/ELW 8 - 96	72.0	54.0	36.0	2851



**idcom**

# Midland Combustion Electric Line Heaters



Midcom Code	Load for Heavy Fuel Oils kW	Rating for Lubricating Oils kW	Rating for Waste Oils kW	Maximum Heating Capacity for HFO. Through 45°C kg/hr
EX/ELW 10 - 36	48.6	36.45	24.3	1925
EX/ELW 10 - 42	56.7	42.525	28.35	2246
EX/ELW 10 - 48	64.8	48.6	32.4	2566
EX/ELW 10 - 60	81.0	60.75	40.5	3208
EX/ELW 10 - 72	97.2	72.9	48.6	3850
EX/ELW 10 - 84	113.4	85.05	56.7	4491
EX/ELW 10 - 96	129.6	97.2	64.8	5133
EX/ELW 12 - 42	75.6	65.7	37.8	2994
EX/ELW 12 - 48	86.4	64.8	43.2	3422
EX/ELW 12 - 54	97.2	72.9	48.6	3850
EX/ELW 12 - 60	108.0	81.0	54.0	4277
EX/ELW 12 - 72	129.6	97.2	64.8	5133
EX/ELW 12 - 84	151.2	113.4	75.6	5988
EX/ELW 12 - 96	172.8	129.6	86.4	6844

## Midland Combustion Limited

Station Works, Four Ashes, Wolverhampton WV10 7BX, UK

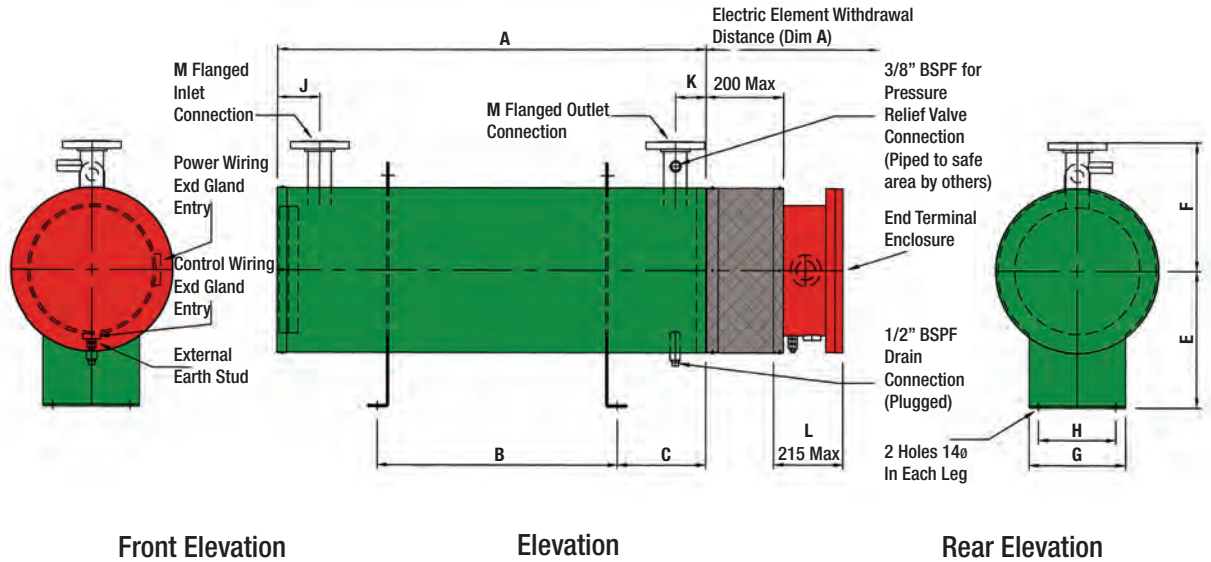
Tel: +44 (0)1902 790541 - Fax: +44 (0) 791526

e.mail: sales@mid-com.co.uk - www.mid-com.co.uk



idcom

# Midland Combustion Electric Line Heater Dimensions



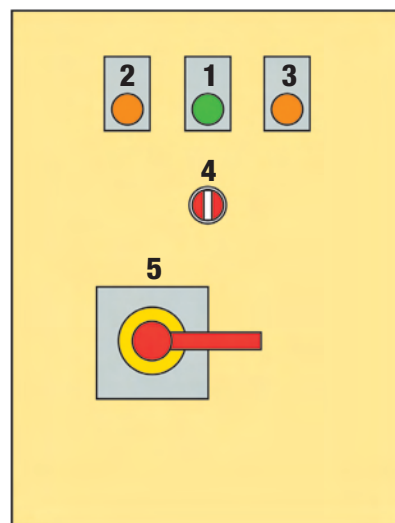
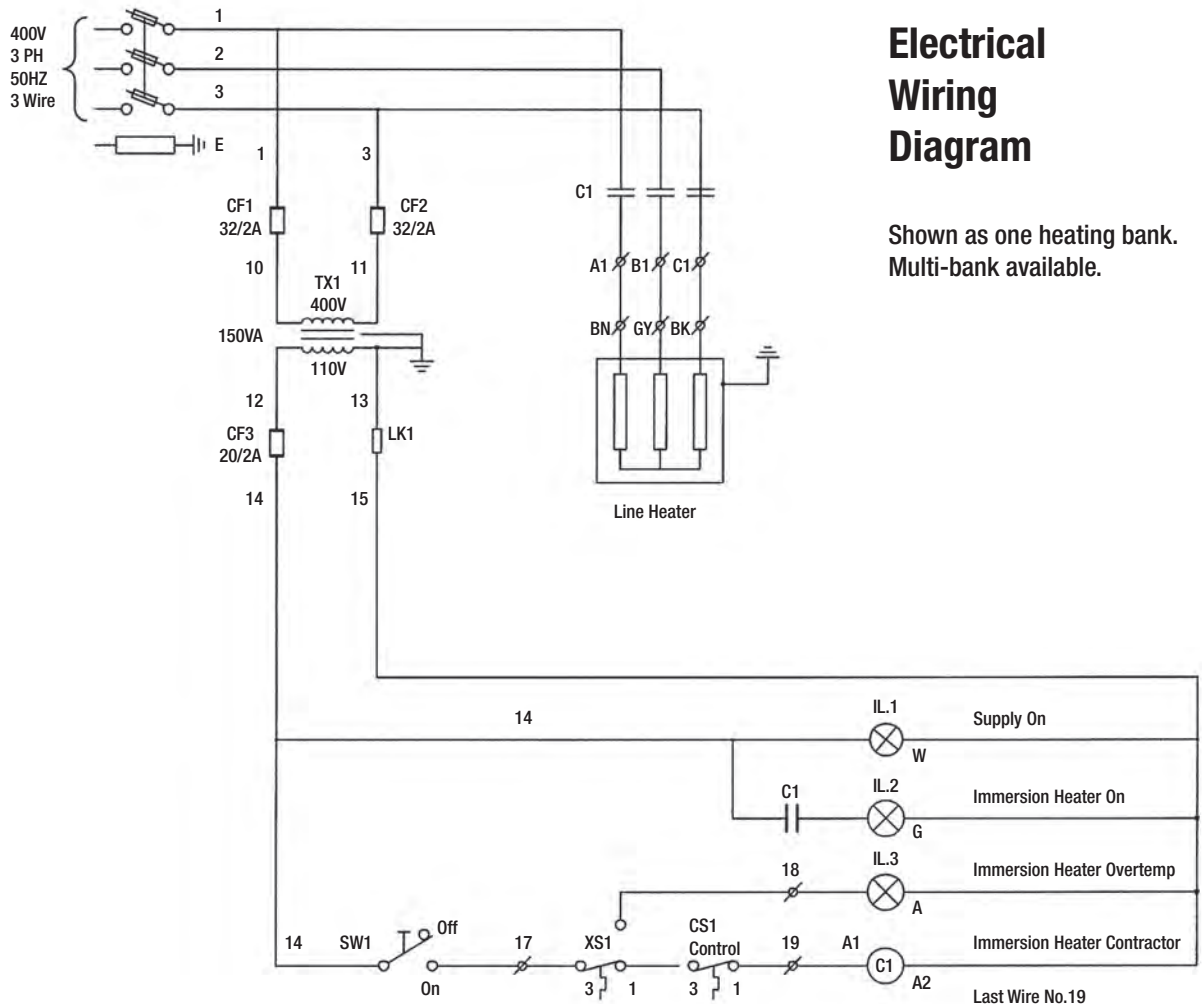
**Note:** Standard heater flanged terminal connections can be supplied with either ANSI B16.5 CL.150 or BS EN 1092:1 2001 PN16 Customer to specify when ordering.

Midcom Code	mm D	mm E	mm F	mm G	mm H	mm Min J	mm Min K	mm L	NB M	
EX/ELW 4	204	200	180	100	70	95	65	147	40	
EX/ELW 6	259	240	230	100	70	100	70	151	40	
EX/ELW 8	324	280	255	150	110	100	70	151	40	
EX/ELW 10	384	325	300	200	150	110	80	156	50	
EX/ELW 12	424	350	330	250	200	110	80	156	50	
	ins	ins	ins	ins	ins	ins	ins	ins	ins	ins
Length	18	24	30	36	42	48	60	72	84	96
	mm	mm	mm	mm	mm	mm	mm	mm	mm	mm
A	500	650	805	955	1110	1260	1565	1870	2175	2480
B	200	320	475	465	620	770	935	1240	1358	1690
C	135	150	150	230	230	230	300	300	380	380



idcom

# Midland Combustion Electric Line Heaters



## Door Layout for (safe area) Electric Immersion Heater IP65 Control Panel

1. Supply On Light (IL1)
2. Immersion On Light (IL2)
3. Immersion Overtemp Light (IL3)
4. Immersion Off/On Selector Switch
5. Fuse Switch Handle