



idcom

## Midland Combustion Steam Line Heaters for Heating Animal Fats / Palm Oils / BIO Fuels

**Midcom** Stainless Steel Steam Line Heaters are used in the heating of Animal Fats, Palm Oils, BIO Fuels and other aggressive mediums. They are multi U loop design and proven in service for the last 50 years. They can use Steam, Hot Water or Thermal oil as the heating medium and are designed to reduce the viscosity of the heated medium to either use in combustion or coatings process.

For these types of aggressive mediums such as BIO Fuels and Palm Oils the design calls for the manufacture in Stainless Steel. **Midcom** can supply in 304 or 316 Stainless. Using Stainless Steel will lengthen the operating life of the heater.

All heaters are compliant with European Legislation covering CE marking/PED approved with the basic design complying with PD5500 and/or ASME.

The first design pressure range is 11.67 barg but heaters as high as 70 barg are designed and supplied for specific process conditions.

Products are hydraulic and electrical tested before they leave the factory.

### Midland Combustion Limited

Station Works, Four Ashes, Wolverhampton WV10 7BX, UK

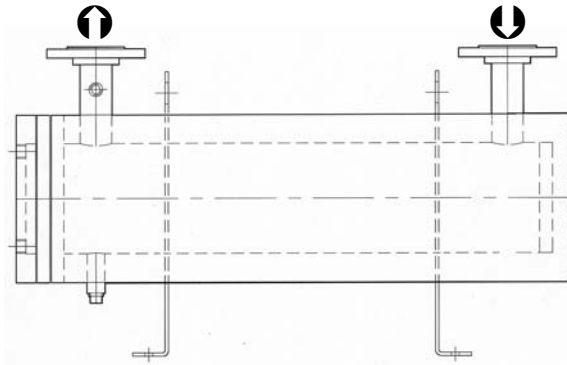
Tel: +44 (0)1902 790541 – Fax: +44 (0) 791526

e.mail: [sales@mid-com.co.uk](mailto:sales@mid-com.co.uk) - [www.mid-com.co.uk](http://www.mid-com.co.uk)



**idcom**

# Midland Combustion Steam Line Fats Heaters

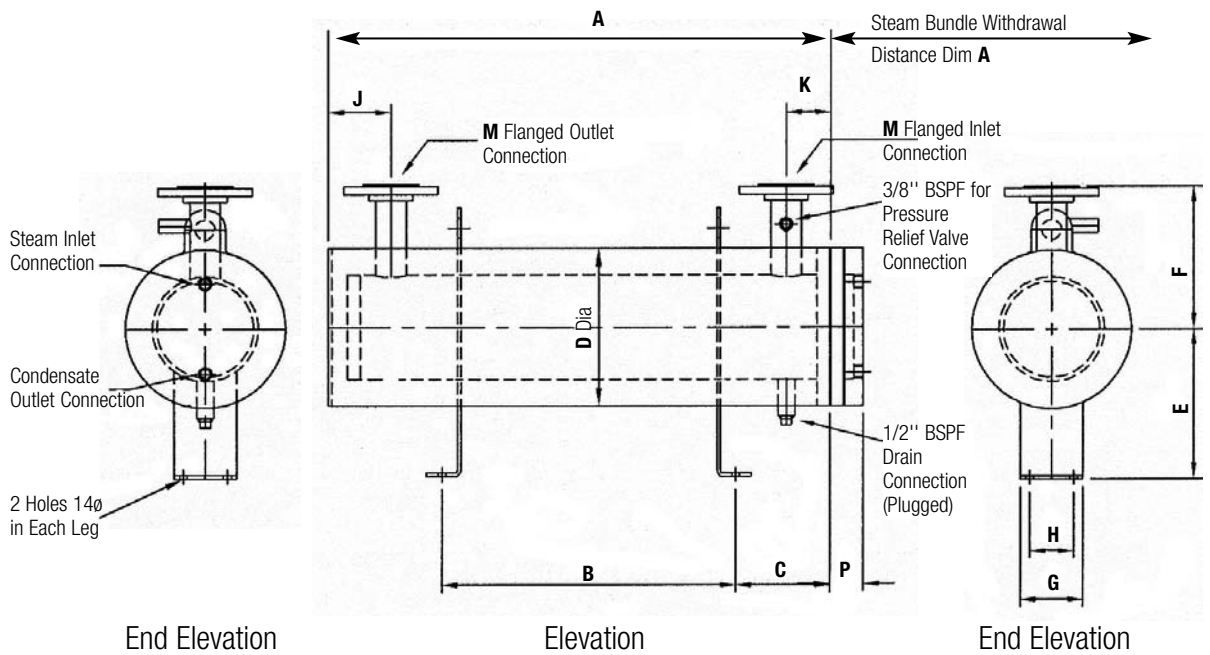


Midcom Code	Based on 7 barg steam. Maximum Heating Throughput Raising Animal Fats Palm Oils/BIO Fuel through 30°C	Heating Surface	Rating
	(kg/hr)	Sq Mtrs	kW
SSL 3 - 30	468	0.26	7.2
SSL 3 - 42	655	0.45	9.0
SSL 3 - 48	748	0.52	12.5
SSL 3 - 60	935	0.65	14.3
SSL 4 - 42	1430	0.99	27.4
SSL 4 - 48	1630	1.13	31.2
SSL 4 - 60	2031	1.41	38.9
SSL 4 - 72	2432	1.69	46.6
SSL 4 - 84	2833	1.97	54.3
SSL 6 - 42	2940	2.04	56.3
SSL 6 - 48	3340	2.32	64.0
SSL 6 - 60	4276	2.97	82.0
SSL 6 - 72	5077	3.53	97.3
SSL 6 - 84	5879	4.09	112.7
SSL 8 - 48	6681	4.65	128.0
SSL 8 - 60	8418	5.85	161.3
SSL 8 - 72	10155	7.06	194.6
SSL 8 - 84	11892	8.27	227.9



Midcom

# Midland Combustion Steam Line Fats Heater Dimensions



**Note:** Standard heater flanged terminal connections can be supplied with either ANSI B16.5 CL.150# or BS EN 1092:1 2001 PN16 Customer to specify when ordering Steam & Condensate sizes will vary, customer to confirm Steam Pressure.

Midcom Code	mm D	mm E	mm F	mm G	mm H	mm Min J	mm Min K	NB M	mm P	ins	ins	ins
SSL 3	144	200	170	80	50	95	65	40	48			
SSL 4	204	200	180	100	70	95	65	40	48			
SSL 6	259	240	230	100	70	100	70	40	53			
SSL 8	324	280	255	150	110	100	70	40	53			
SSL 10	384	325	300	200	150	110	80	50	58			
SSL 12	424	350	330	250	200	110	80	50	58			
SSL 14	474	385	360	300	250	120	90	50	67			
Length	ins	ins	ins	ins	ins	ins	ins	ins	ins	ins	ins	ins
	18	24	30	36	42	48	60	72	84	96	108	120
	mm	mm	mm	mm	mm	mm	mm	mm	mm	mm	mm	mm
A	500	650	805	955	1110	1260	1565	1870	2175	2480	2785	3090
B	200	320	475	465	620	770	935	1240	1385	1690	1855	2160
C	135	150	150	230	230	230	300	300	380	380	450	450